



## Questions?

Give one of our representatives a call at 02 4955 5422, or contact us by e-mail at [info@aussteel.net.au](mailto:info@aussteel.net.au) and learn why AusSteel truly is **The Ultimate Steel Building System**.

Licensed AusSteel Reseller

Truecore®



AusSteel Pty Ltd  
17 Rogilla Close  
Wallsend NSW 2287  
[www.aussteel.net.au](http://www.aussteel.net.au)

Phone: 02 4955 5422  
Fax: 02 4955 5400  
E-mail: [sales@aussteel.net.au](mailto:sales@aussteel.net.au)

TRUECORE® steel is a zinc/aluminium alloy coated steel with a distinctive blue resin surface finish, made by BlueScope Steel specifically for the house framing market.



100%  
Termite Proof



Steel  
Strength



Design  
Flexibility

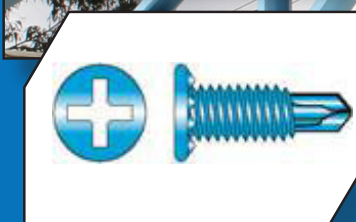


Recyclable  
Material



50 Year  
Warranty\*

\* Warranty available on application. For full terms and conditions and to determine the eligibility of your building see our warranty page.



Introduction to  
**THE ULTIMATE  
STEEL BUILDING  
SYSTEM**



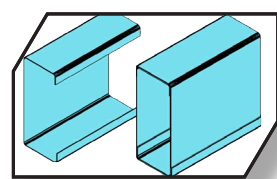
# Welcome to the Ultimate Building System

The AusSteel Ultimate Steel Building System is the result of years of research to develop a completely engineered, fully designed steel framing system to meet the rapidly growing demands for house framing in Australia.

Our CAD-based design/engineering software, specially designed roll-forming techniques, unique fastener system with innovative design and assembly process mean that every member and connection point of your frames and trusses is fully and reliably engineered. Our frames and trusses are engineered from top to bottom, ensuring a fully engineered load path throughout the structure.

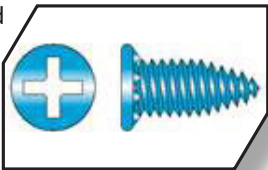
## Wall Frames

Every aspect of our frames, from the specially developed fixing Screw to our unique “boxable” lipped C section, has been designed so that the best possible product makes it into your project.



Our 90mm Lipped C section is not only stronger than the old lipless sections of the same thickness, but far safer, greatly reducing OH&S risks on site. It also features an offset lip which allows it to be boxed together, effectively doubling the strength of a given member.

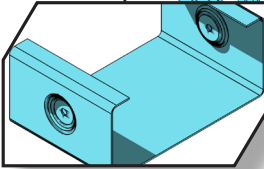
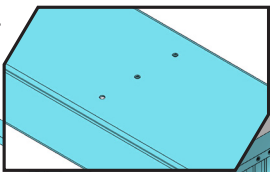
Our specially designed and engineered Frame fixing screw system means each connection point through each frame is reliably engineered.



Pre-punched service holes make the installation of plumbing, electrical or other services a snap!

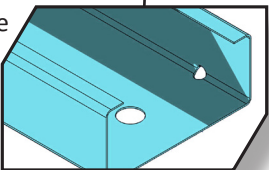
Flat noggins are installed to allow for Towel Racks or other similar internal features.

Truss locations are marked on the top plate of the frame for rapid and accurate set out.

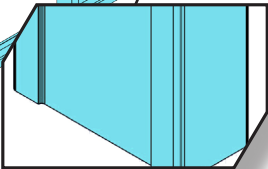


Dimples at every connection mean a perfectly flush face, eliminating issues with gyprock or other claddings

Holes are pre-punched in the bottom plate to simplify locating and installing the required holddown pins while drainage holes allow any trapped moisture to escape.



K-Bracing provides effective racking resistance and ensures frames stay straight and true. At the same time, our continuous noggin provides even more lateral restraint.

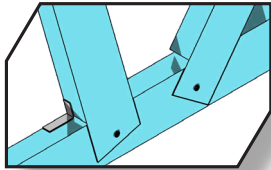


Swaged stud ends provide a better fit in top and bottom plates.

## Roof Trusses

The trusses used in the Ultimate Steel Building System have been specially designed for builders who are more familiar working with Timber, yet want the durability, reliability and architectural flexibility afforded by steel.

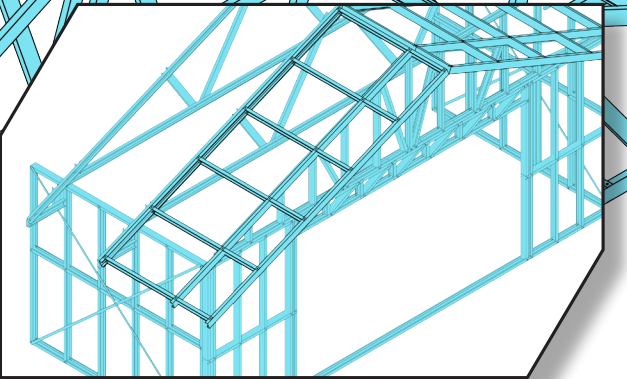
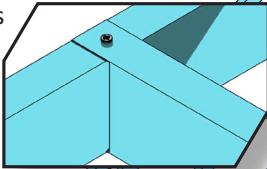
Our unique FlushTruss system is the product of years of research and developement. We now provide a product that will meet all of your needs.



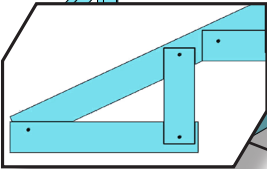
Our flush truss design means far fewer sharp protruding edges which, in turn, reduces OH&S concerns on site.

Our unique Custom Truss Noggins simplify truss setout and add significant bracing to the truss top chords.

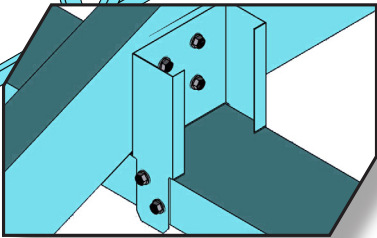
Our ceiling trimmers are custom made for each job.



Gable overhangs are achieved with the use of a “gable frame” which eliminates the need for outriggers and fascia beams and makes for a much faster process.



Built-in or “trussed” eaves are included to make the process of constructing soffits much easier.



Truss to top plate connection via our specially designed and engineered HB Bracket allows large surface areas to both the truss and top plate for fixing.

## Software/Engineering

Our CAD Based Design software and our custom AusSteel data files, coupled with our unique screw fixing system mean that your frames and trusses have been engineered, from top to bottom.

